

VERITAS Storage Exec™ 5.5

SUPERIOR WINDOWS DATA MANAGEMENT

Today's administrators face an overwhelming challenge when it comes to storage and how to manage the ever-increasing growth of data. Most administrators react to this challenge by adding storage capacity. However, this reaction is only a temporary solution that does not address the real issue – valuable storage resources are being wasted on inappropriate, non-business files. This waste is a direct result of users' careless storage habits, lack of effective policy, and poor storage management.

VERITAS Storage Exec™

VERITAS Storage Exec™ helps organizations manage and control rampant storage growth. With Storage Exec, organizations can reclaim up to 30% of wasted storage space and reduce future growth. Not only does this maximize use of storage resources, but it also leads to faster, more efficient backups and improved server performance.

Taking Control of Storage Resources

Administrators need help to be more proactive in managing storage resources more effectively. Effective storage management with Storage Exec can help administrators significantly reduce costs and maximize storage resources. Storage Exec will help administrators:

- Identify and recover wasted disk space
- Enforce policies that limit user disk space
- View detailed reports to discover problem areas
- Block unwanted file types from business servers

PART OF THE BACKUP EXEC SUITE

VERITAS Storage Exec now integrates with VERITAS Backup Exec for Windows Servers simplifying management and enabling you to immediately back up or archive data from Storage Exec reports using Backup Exec.

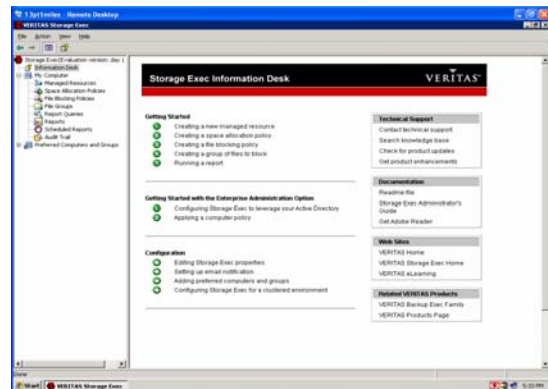
The Backup Exec Suite is the Gold Standard in Windows Data Protection, delivering continuous data protection and the fastest disk-based data protection. The Backup Exec Suite makes today's Windows environments simple to grow – and simple to manage.

KEY BENEFITS

- Simple, automated data management
- Faster backup times
- Integrated with VERITAS Backup Exec™
- Reclaim wasted storage
- Reduce storage growth
- Help reduce legal exposure

PRODUCT HIGHLIGHTS

- **NEW! Information Desk-Based Administration Console:** New overview page easily guides users through the task of setting up and configuring the software. This makes getting started faster and easier.



Storage Exec's new information desk Administration Console provides an intuitive, easy-to-use guide that makes effective storage management easier than ever!

- **NEW! Backup Exec Integration:** Seamless integration with Backup Exec via Backup Exec™ SmartLink, enables users to immediately backup or archive data from Storage Exec reports.
- **NEW! Microsoft Certified:** Storage Exec is fully Microsoft Windows certified by Veritest, ensuring full compatibility and reliability in Windows servers' environments.
- **NEW! Editions:** Storage Exec is now available in multiple editions to better fit your environment.
- **NEW! Options & Agents:** Storage Exec is now easier than ever to grow from a single server to an enterprise. New, comprehensive add-on options and agents enable customers to enhance Storage Exec functionality and easily grow the overall environment.



- **ENHANCED! Installation:** Completely redesigned installation program makes Storage Exec easier than ever to install and configure.

AUTOMATED DATA MANAGEMENT

Storage Exec has a wide variety of automated features that make effective storage management easy, efficient, and virtually effortless.

- Quota Management
- Extensive Reporting
- File Filtering and Blocking

Automated Quota Management

Storage Exec can create and enforce quota limits on individual users, files, folders, or partitions. When pre-set thresholds are exceeded, Storage Exec will send real-time notifications that enforce quota policies and alert users of storage usage.

File Blocking

Administrators can set up real-time filters that block inappropriate, non-business file types such as graphics, MP3s, and viruses from being stored on the server. Storage Exec will screen the files even if clever users attempt to disguise unauthorized file types as legitimate file types. Simply select the network object, select which file types to restrict, and keep servers free from unnecessary, non-business files. If a user attempts to write a blocked file type onto a server, they will receive an error message indicating the file type is prohibited.



Without Storage Exec, non-business critical files like MP3s, viruses, personal pictures are backed up - increasing backup and restore times, and taxing your storage resources.

With Storage Exec, non-business critical are blocked – improving backup and restore times, and maximizing your storage resources.

Extensive Reporting

Reports provide an overview of disk consumption as well as information required to manage space effectively. Reports can provide a wealth of information to help identify inappropriate file types, files and applications being stored on non-designated servers or partitions, and identify files not being included in the backup policies. In addition, Storage Exec enables *drill down reporting*

where administrators can use active HTML reports to open, move or delete files right from a very familiar web browser view.

STORAGE EXEC EDITIONS

Storage Exec™ is now available in multiple editions that can be purchased to fit your environment:

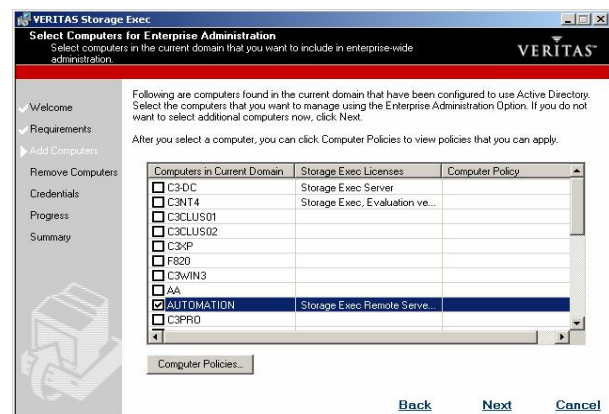
Storage Exec offers storage quota management, file auditing, file blocking, and basic reporting capabilities. Add-on options allow you to extend the functionality of Storage Exec to remote Windows computers.

Storage Exec Small Business Server Edition offers the same functionality, but is a lower cost solution to be installed and run with Microsoft Small Business Server Premium and Standard Editions.

STORAGE EXEC OPTIONS AND AGENTS

Storage Exec has a variety of options and agents that enhance Storage Exec functionality and enable users to customize Storage Exec to better fit their storage management needs.

Enterprise Administration Option: The Enterprise Administration Option (EAO) integrates storage management with Windows Active Directory for easier administration of enterprise-wide storage management. In addition, users can establish space allocation alarms and actions, schedule report generation, receive chargeback reports, block unauthorized content and integrate with data protection and availability products via Active Directory hierarchical object management.



Storage Exec's Enterprise Administration Option makes it easier to manage your company-wide storage.

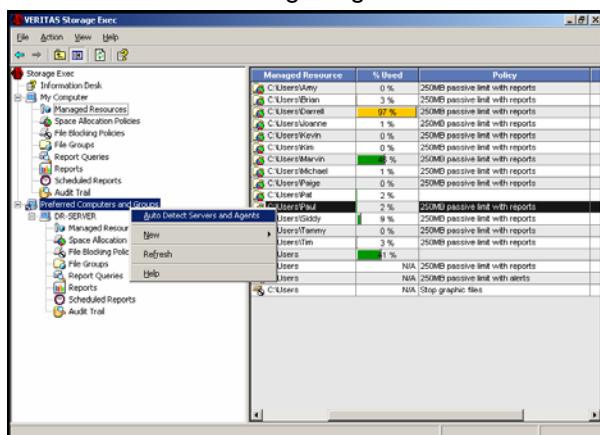
Advanced Reporting Option: The Advanced Reporting Option (ARO) contains more advanced reporting and queries, allowing users to generate reports unique to their specific environments. In addition, ARO unlocks the ability to edit all reports, including the initial ten reports that come standard with Storage Exec. ARO goes one step further by providing detailed information and in-depth insight from eighteen additional storage reports. A sample of the additional reports provided by ARO includes:

- Best Practices
- Large Duplicate Files
- Chargeback Summaries
- Trend Summaries
- And much more

Network Appliance Option: The Network Appliance Option (NAO) enables users to apply Storage Exec functionality to Network Appliance Filers. With the NAO, administrators can manage policy-based quotas on QTrees, screen inappropriate files, and receive extensive reports to help identify and drill-down on problem areas.

Remote Server Agent: The Remote Server Agent (RSA) allows administrators to extend Storage Exec quota management and file blocking capabilities to remote servers. This makes the decision easier and more cost effective to manage and protect all servers.

Remote Workstation Agent: With the Remote Workstation Agent (RWA), administrators can filter content and block files on user workstations. This added protection makes it easier to prevent unauthorized files from getting on the network.



Storage Exec's enhanced graphical user interface is extremely easy to use. Storage Exec can automatically detect Remote

Summary

VERITAS Storage Exec helps organizations maximize use of storage resources and reduce backup windows by providing automated storage management. Storage Exec enables administrators to establish real-time storage quotas for individual users, block non-business files such as MP3, viruses, and games from company servers and create extensive, detailed storage reports to identify and drill-down on problem storage areas.

New integration with Backup Exec makes Storage Exec a key component of a complete data protection solution improving backup speed and efficiency. Enhanced feature set, simplified pricing and new options and agents make Storage Exec easier to use, easier to purchase, and more flexible to meet your specific business needs.

TECHNICAL SPECIFICATIONS

Storage Exec Server Requirements:

- Microsoft Windows Server 2003 family
- Microsoft Windows 2000 family
- Microsoft Small Business Server 2000/2003
- NT4 SP6a or above on Workstation and Server
- Windows XP Professional Workstation SP1 or later

Storage Exec Option Requirements:

- EAO: Windows 2000/2003/XP
- ARO: Windows 2000/2003/XP/NT4
- NAO: ONTAP Version 6.4 and higher

Storage Exec Agent Requirements:

- RSA: Windows 2000/2003/XP/NT4
- RWA: Windows 2000 Professional or XP Professional Workstation

For more information on compatibility, please visit: <http://support.veritas.com/rd/se-compatibility.htm>.

VERITAS Software Corporation
Corporate Headquarters
350 Ellis Street
Mountain View, CA 94043
650-527-8000 or 866-837-4827

For additional information about VERITAS Software, its products, or the location of an office near you, please call our corporate headquarters or visit our Web site at www.veritas.com or www.backuexec.com.